

Dec 2022

# VIEW FROM THE HILL

Official Newsletter of the Kings Hill Parish Council



## Welcome and Merry Christmas from Kings Hill Parish Council.

A parish council is a local authority that makes decisions on behalf of the people in the parish and has an overall responsibility for the well-being of its local community. It is the level of government closest to the community, with the district authority (Tonbridge and Malling Borough Council) above it in the hierarchy. The Parish Council is responsible for the following:

- The Kings Hill Community Centre
- Maintenance of the playground and green in Anson Avenue and open spaces in Lapins Lane and Garden Way.
- Planning Consultee
- Acting as a liaison between the community and other local organisations such as Kings Hill Estate Management, TM Active (Sports Park), Kent Highways services and Tonbridge and Malling Borough Council
- Manage allotments

Follow us on Facebook [@kingshillparishcouncil](https://www.facebook.com/kingshillparishcouncil)  
[www.kingshillparishcouncil.gov.uk](http://www.kingshillparishcouncil.gov.uk) >



## Message from The Chairman

ANTHONY PETTY

Wishing Kings Hill a Merry Christmas and a Happy New Year. As life returns to normal after 2 years of Covid, I thought it prudent to show the finances of the last 5 years and the marked changes that have been made. As you will see, The Parish Council have well and truly turned the corner and finances are in a much better place than ever before to better serve the community of Kings Hill . I am more than happy to discuss our financial position if anyone has any questions, please email myself at [anthony.petty@kingshillparish.gov.uk](mailto:anthony.petty@kingshillparish.gov.uk)

## New Councillors

We are delighted to announce that Neil Sherlaw and Mike Hartman have been co-opted as the new parish councillor's for Kings Hill Parish Council they joined us in September 2022.



## This issue:

Parish Council's Finances  
PAGE 02 & 03

Message from Tonbridge and Malling Borough Councillors and My Community Voice  
PAGE 04

Announcements, Events, and Updates  
PAGE 05

Kings Hill Community Centre  
PAGE 06

Climate Change Emergency  
PAGE 07

Response to Regulation 18 Local Plan and Meet the Councillors  
PAGE 08

## Accounts for the Last 5 Years

	AT 31.3.2018	AT 31.3.2019	AT 31.3.2020	AT 31.3.2021	AT 31.3.2022
Balance Brought Forward	£ 86,769	£ 188,753	£ 104,713	£ 50,801	£ 28,202
Precept or Rates and Levies	£ 279,138	£ 292,897	£ 327,018	£ 389,502	£ 424,279
Total other receipts	£ 481,940	£ 483,920	£ 364,254	£ 243,265	£ 169,150
Staff Costs	£ 310,694	£ 401,001	£ 413,779	£ 410,889	£ 126,290
Loan interests/ capital repayments	£ 42,696	£ 39,138	£ 42,696	£ 42,696	£ 42,696
All other Payments	£ 305,704	£ 420,718	£ 288,709	£ 201,781	£ 301,705
Balances carried forward	£ 188,753	£ 104,713	£ 50,801	£ 28,202	£ 150,940
Total value of cash and short terms investments	£ 159,836	£ 86,229	£ 32,546	£ 72,438	£ 163,858
Total fixed assets plus long term investments and assets	£ 206,043	£ 205,627	£ 220,686	£ 219,117	£ 164,332
Total Borrowings	£ 401,340	£ 337,732	£ 352,963	£ 326,976	£ 305,724

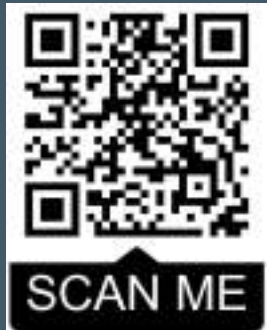
## Parish Council Finances



The Council's accounts are prepared in accordance with the Account and Audit Regulations (2006). They are subjected to external and internal audit (by an independent auditor). Kings Hill Parish council was subject to an interim audit on 3rd November 2022. Copies of the full accounts are available on request.

You can be assured that Parish Council finances are managed efficiently and cost-effectively. On an annual basis, we review our Internal Controls, Investment Strategy, Asset Register, Reserves, Risk Assessment and Financial Regulations and undertake regular reviews to ensure we obtain value for money, we follow best practice and carefully control what is public money. Regular reports are received from the Internal Auditor who plays an important part in the internal control of the Parish Councils finances. In recent years we have undertaken several activities with the aim of improving services to our residents, but at the same time we have always been careful to ensure our finances remain sound.

Residents can be assured that our finances are in good shape and public money is being carefully looked after. Our cash and bank holdings on 31 March 2020 were £32,546, on 31 March 2021 they were £72,438 and at 31 March 2022 they were £163,858. We are pleased to be able to report that this upward trend is continuing, and we expect on 31 March 2023 that our cash and bank holdings will be in the range of £400K to £420K. Further evidence that your money is being properly looked after.



Scan the QR Code to view  
the Full Accounts from  
2018-2022

Councils are expected to hold in reserves an amount equivalent to 3 - 12 months of its budget and our budget for 2022/2023 which was £659,645 sits within those reserve parameters.

Our accounts for the year to 31 March 2022 and previous years are on our website [www.kingshillparish.gov.uk](http://www.kingshillparish.gov.uk). On our website you will also find up to date financial information for the year 2022/2023 to date.

Our financial year runs from 01 April to 31 March. During December / January, the Parish Council will be considering the councils budget for 2023/2024. Budgetary work is underway, and it is expected that our precept which is the amount charged to each council taxpayer will increase by approximately 5% by £6.16 per annum for a Band D Council taxpayer. We fully appreciate that the increase will not be welcome but the council like everyone else is being impacted considerably with rising costs, we are however being extremely prudent with our finances, and you have our assurance that we will keep increases to the minimum. Our 2023/2024 budget when finalised will be sustainable and realistic and will allow us to provide the village with projects, services, and activities that we hope the community appreciates.



## Message from Borough Councillors - Kim Tanner- Chris Brown - Dan Harman



There is so much going on at TMBC -we welcome the opportunity to share some of this. Whilst finances are tight in today's economic climate, we continue to work hard to progress the offering to the residents of our borough. Firstly, we are very proud to have the lowest crime numbers in the county. We have new initiatives in place to hold on to this position such as access to new deployable CCTV cameras, and working with Kent Police who are bringing in a new model which will see more 'bobbies on the beat'. Anti-social behavior is high on our list of priorities with a new Public Space Protection Order (PSPO) taking effect from early next year, and we will be helping the police to deal with violence in and around licensed premises during the FIFA World Cup.

We can also claim to have the highest recycling rates in Kent. The borough's food waste is used to produce gas at Blaise Farm which is sufficient to supply an area the size of Kings Hill. We have opened our eco cafe at Leybourne Lakes- the most innovative building in the South East -designed and built by TMBC as part of our Climate Change strategy.

Our teams are on the lookout for the availability of grants, and we have been successful in securing funds for projects. We provided childrens winter coats to the most needy through grant funding, and we will be providing finance for shopfront improvements, carbon reduction and energy efficiencies, and support for rural business and communities in this way. We won awards with Clarion Housing in recognition of our project for energy efficiencies in their tenant's properties. This will continue for more tenants as funding is secured.

We want to ensure our borough is a healthy place to live by working alongside tmactive in the management of Kings Hill Sports Park, Larkfield Leisure Centre, the Angel Centre and Poulton Wood Golf Course-to name a few. Our OneYou team help our GP's in providing support for health, coordinating weekly Wellbeing Walks with help from valued volunteers. Rough-sleeper numbers are minimal with work carried out with partner agencies, and 2 new Homelessness Prevention Officers who are busy keeping roofs over heads.

For Kings Hill specifically, we continue to work hard on your behalf, and therefore please feel free to contact us whenever required. Our email addresses are; [christopher.brown@tmbc.gov.uk](mailto:christopher.brown@tmbc.gov.uk), [dan.harman@tmbc.gov.uk](mailto:dan.harman@tmbc.gov.uk) and [kim.tanner@tmbc.gov.uk](mailto:kim.tanner@tmbc.gov.uk). We would also urge you all to follow our Facebook page 'Kings Hill TMBC Councillors' for news and general information.

My Community Voice is a two-way engagement tool brought to you by Kent Police. Whether you live, work or socialize in Kent or Medway, My Community Voice provided real-time messages directly from our police officers, staff and volunteers about matters that may affect your community.

From crime prevention advice, to the latest updates on scams, appeals or events- this is your opportunity to discuss the issues that affect you directly. You control what information you receive and how you receive it, by email, text or voice messages.

You can also share messages or reply to us and others if you have information. The survey tool function gives us a greater insight into your specific concerns. Sign up today using the QR code or visit [www.mycommunityvoicekent.co.uk](http://www.mycommunityvoicekent.co.uk)



## Tonbridge and Malling Ramblers



Our friendly group is one of 13 Ramblers groups in Kent and part of the national Ramblers walking organisation. We explore the beautiful countryside of Tonbridge and Malling and surrounding areas. You don't have to be a Ramblers member to try a couple of walks with us, to help you decide if you'd like to join. If you're new to our walks, it's a good idea to contact the walk leader beforehand to check that their walk will suit you.

For details of all our December and future walks, and walk leader contacts, see [www.tonbridgeandmallingeramblers.org.uk](http://www.tonbridgeandmallingeramblers.org.uk).



## Allotment News

As the year is drawing to a close, we look forward to welcoming lots of new allotment holders to the new allotment site-there are 28 plots available to add to the original 74. We hope to start allocating these early in 2023. The allotments are located at Beacon Avenue, near The Sports Park. It is a great community, with well established plots producing successful crops and beautiful flowers.

If you are interested in putting your green fingers to work with an allotment plot of your own, please email [allotments@kingshillparish.gov.uk](mailto:allotments@kingshillparish.gov.uk) for more information about becoming a tenant and joining the waiting list.

## Remembrance Day Service



The Parish Council helped organised the Annual Remembrance Service on Sunday 13th November 2022.

We would like to thank all those involved in organizing the Remembrance Sunday Commemorations. Your hard work and careful preparation is greatly appreciated.

Thank all residents who attended the service and all the local organizations who laid wreaths.

"They shall grow not old, as we that are left grow old. Age shall not weary them, nor the years condemn. At the going down of the sun and in the morning. We will remember them." – Laurence Binyon

# Announcements, Events and Updates



## Notice Boards

The Parish Council have 4 noticed boards located around Kings Hill to also keep you up to date and all Full Council meetings are posted on the notice boards with 3 days clear notice. The notice boards can be found outside the Community Centre, Pippin Way and on the Cricket Pitch.

## Considerate Parking

We are aware of some inconsiderate parking within Kings Hill and urge you to consider the effect this can have on the community.

Examples of inconsiderate parking are where vehicles are parked on pavements when it is considered not necessary, or where they are parked too far onto the pavement causing a hazard to pedestrians or where vehicles are parked too close to the edge of people's driveways or to road junctions. New issues relating to inconsiderate or anti-social parking are being raised all the time.

Parking too close to the edge of driveways often leads to residents being unable to access or to exit from their drive resulting in additional parking on the road. Parking too close to road junctions is dangerous and will result in the introduction of double yellow line junction protection.



## Kings Hill Community Centre

Here at the Community Centre we are proud to be the venue of choice for so many activities for the local community. Details of our regular classes can be found on our website [www.kingshillcommunitycentre.org.uk](http://www.kingshillcommunitycentre.org.uk).

Our halls are ideal for other functions such as birthdays, parties, charity events, christenings and more. We offer a range of different add ons such as tablecloths, chair covers and PA systems which are available to hire at the time of booking.

 **Contact 01732 220919**  
**[email bookings@kingshillparish.gov.uk](mailto:bookings@kingshillparish.gov.uk)**  
**for more information or to arrange a viewing.**

## New at the Community Centre

The Townsend Hall has recently been refurbished to a blank canvas. The perfect back drop to any event.

Available for hire!



Before



After

## What can we offer?

The Parish Council recently purchased white table cloths and chair covers for all hirers of the Community Centre as an optional extra. Both look stunning for special occasions such as weddings, christenings, baby showers and The Townsend Hall has a fully licensed bar.

As well as the large halls we have two smaller meeting rooms which can be used in a variety of ways. We have tutoring, local meetings, and even a major bank in attendance in our Gibson and Braham suite. These are available to book on an ad-hoc basis so please get in contact today.



## Climate Change Emergency

Ultimately, tackling climate change is everyone's responsibility. If we want to leave a planet that our children and grandchildren can enjoy then we all need to play our part, including the people of Kings Hill.

So, what do we do? While Kings Hill Parish Council strives to do what we can to maintain and improve the local environment, our first step has been to declare a climate emergency, recognising the problem and our responsibility to do something about it. Next we will do a carbon audit of Parish Council activities and use that to create a plan to achieve carbon neutral by 2030. But there is more that can be done, particularly if the community works together on this including:

- Creating a task force to establish a green agenda that includes developing a resilience policy
- Developing a tree maintenance programme
- Develop and promote green transport plans including safe routes to school
- Provide access to Electric Vehicle charging points
- Ensure the Community Centre is as energy efficient as possible
- Use green energy sources and environmentally friendly products
- Plan for a green community in a Neighbourhood Development plan
- Limit the use of plastics, especially single use plastics within the council
- Reduce waste and recycle as much as possible
- Protect important open spaces and carbon sinks and consider creating a community orchard and / or wildflower meadow and more allotments
- Maximise the use of open spaces to provide recreational opportunities.

If you have observations about how the environment could be improved in Kings Hill, please send an email to [clerk@kingshillparish.gov.uk](mailto:clerk@kingshillparish.gov.uk).

## Some highlights over the last 3 months

### Halloween Charity Competition

- The Parish Council hosted a Halloween Competition for Charity. The winner's house looked amazing and the live actors were a spooky touch.
- The winners donated the prize fund of £165.00 to the Last Chance Animal Rescue in Edenbridge.

### Community Centre

- Table Cloths and Chair Covers were recently purchased by the Parish Council for the Community Centre.
- For more information, please see page 7.

### Parish Council Election May 2023

Do you care passionately about the community in which you live and work? Would you like to help shape the future direction of Kings Hill Parish Council.

If so, you might be interested in standing for election to the the parish council in May 2023.

If you are interested and would like to find out more please contact the Parish Clerk by sending an email to [clerk@kingshillparish.gov.uk](mailto:clerk@kingshillparish.gov.uk) alternatively you could contact one of your parish councillors who will be able to tell you more about the role from a councillor perspective.



# Kings Hill Parish Councils Response to Regulation 18 Local Plan

The Parish Council has been busy over the past few weeks composing the councils response to TMBC's Regulation 18 Local Plan Consultation. The Local Plan sets the vision and framework for how the borough will develop over time. It guides and informs their decision making on planning applications that come forward.

The government requires all local planning authorities to plan for new homes. For our borough, the target is an average of 839 a year between now and 2039. TMBC already has over 2,700 homes in the pipeline, and the new Local Plan will help them plan for the rest.

Having a plan in place will help prevent speculative developments which don't meet the plan's objectives and strategy. TMBC recognises the importance of the Green Belt and changes will only be considered in exceptional circumstances. TMBC will take a brownfield first approach when looking for places to build. That means making the best use of previously developed land for delivering new homes.



Kings Hill Parish Council went through the extensive plan and collated the parts that specifically related to Kings Hill and the surrounding areas. We invited local residents to respond to the plan in a simple way, and showed them the areas they may wish to comment on. We also set up a notice of the sites at the Community Centre. Following weeks of campaigning and engaging / explaining to residents we submitted a 114 page response to TMBC, as well as over 100 response feedback questionnaires from residents. Kings Hill Parish Council would like to thank local residents who also submitted their responses and engaged others to do so.

## Upcoming Full Council Meetings

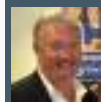
12 JAN 2023, 19.30h

2 FEB 2023, 19.30h

23 FEB 2023, 19.30h

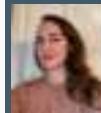
All held at Kings Hill Community Centre and open to the public. Agendas are posted on the website and noticeboards with at least 3 clear days notice.

# Know Your Councillors



**Anthony Petty**  
Chairman

[anthony.petty@kingshillparish.gov.uk](mailto:anthony.petty@kingshillparish.gov.uk)



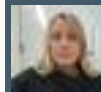
**Shakira Falzon-Thomas**  
Vice Chairman

[shakira.falzon-thomas@kingshillparish.gov.uk](mailto:shakira.falzon-thomas@kingshillparish.gov.uk)



**Margaret Colman**  
Councillor

[margaret.colman@kingshillparish.gov.uk](mailto:margaret.colman@kingshillparish.gov.uk)



**Siobhan Kirk**  
Councillor

[siobhan.kirk@kingshillparish.gov.uk](mailto:siobhan.kirk@kingshillparish.gov.uk)



**David Waller**  
Councillor

[david.waller@kingshillparish.gov.uk](mailto:david.waller@kingshillparish.gov.uk)



**Sarah Barker**  
Councillor

[sarah.barker@kingshillparish.gov.uk](mailto:sarah.barker@kingshillparish.gov.uk)



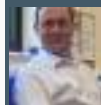
**David Rush**  
Councillor

[david.rush@kingshillparish.gov.uk](mailto:david.rush@kingshillparish.gov.uk)



**Angela Vincent**  
Councillor

[angela.vincent@kingshillparish.gov.uk](mailto:angela.vincent@kingshillparish.gov.uk)



**David Hurring**  
Councillor

[david.hurring@kingshillparish.gov.uk](mailto:david.hurring@kingshillparish.gov.uk)



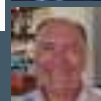
**Felix Mclymont**  
Councillor

[felix.mclymont@kingshillparish.gov.uk](mailto:felix.mclymont@kingshillparish.gov.uk)



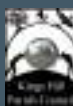
**Mike Hartman**  
Councillor

[mike.hartman@kingshillparish.gov.uk](mailto:mike.hartman@kingshillparish.gov.uk)



**Neil Sherlaw**  
Councillor

[neil.sherlaw@kingshillparish.gov.uk](mailto:neil.sherlaw@kingshillparish.gov.uk)



Contacting The Parish Council  
If you wish to contact the Parish Council, please email the Clerk at [clerk@kingshillparish.gov.uk](mailto:clerk@kingshillparish.gov.uk) or call 01732 870382.